

Advanced Gallery with Zoom

Magento 2

USER GUIDE



Sr. No	Particular	Page No.
1	Notice	3
2	Extension Description	4
3	How does this extension work?	4
4	Installation Steps	5
5	How to use	7
6	Getting help with Magento	8

NOTICE

ZealousWeb Technologies welcomes you. Thank you for showing interest in our site.

ZealousWeb Technologies reserves the right to make modifications, improvements, enhancements, and other alterations to its products & services at any time. In addition to this, it can also discontinue the use of any product or service without prior notification.

ZealousWeb's standard warranty policy warrants the performance of its merchandise in compliance with the specifications applicable at the time of sale. We utilize the testing and other quality control techniques to the extent that ZealousWeb deems necessary to support this warranty. Unless administered by governmental demands, testing of all the parameters of each product will not be necessarily done.

On the contrary, in the absence of a written agreement, ZealousWeb is not liable for the customer's product design or application assistance. For the purchased products and applications, customers are held responsible for using ZealousWeb plugins.

ZealousWeb does not give warranty or guarantee that any license, either conveyed or implied, is granted under ZealousWeb mask work right, patent right, copyright, or other intellectual property rights related to any combination, machine, or process in which ZealousWeb products or services are used.

Information published by our company regarding the third-party products or services does not mean that ZealousWeb provides a license to use such products or services. Brand products and service names are registered trademarks of their respective owners or buyers.

EXTENSION DESCRIPTION

Advanced gallery extension for Magento 2 allows customers to zoom product image and change the gallery view on the product page and category pages. You can simply configure from system configuration admin side.

Features

- Admin can enable/disable the functionality
- Admin can enable/disable the product page zoom functionality
- Admin can enable/disable the category page zoom functionality
- Restrict Image Zoom Option by Store Views & Customer Groups
- Options for the different types of zoom
- Arrange gallery view option (Gallery/Slider)
- Product page gallery image zoom options
- Category page product image zoom options
- Mobile view zoom effect

HOW DOES THIS EXTENSION WORK?

To use this extension, The admin has to enable the extension from the store configuration and enable for product page and category page. Once the admin enables the extension, the admin and customer can see the product image zoom effect on product and category page also for mobile view.

INSTALLATION STEPS

Step1: Check Permission

Make sure the "app" has sufficient write permission to write the files.

Step2: Upload Files

Unzip and upload all content of the extension folder to the root folder of your Magento website using FTP client. On the request whether existing files (folders) should be replaced – select Yes.

Step3: Enable Extension using SSH

If you have SSH access of you web server then you can setup extension using commands too. Please find commands below:

For windows server:

```
php bin/magento setup:upgrade  
php bin/magento setup:static-content:deploy
```

For linux server:

```
bin/magento setup:upgrade  
bin/magento setup:static-content:deploy
```

Step5: Refresh Cache

You can refresh cache from **System > Cache Management** from admin section. If you have SSH access of web server then you can refresh magento cache by following command:

For windows server:

```
php bin/magento cache:clean
```

For linux server:

```
bin/magento cache:clean
```

In case you face any problems while installing, feel free to Contact Us at magento@zealousweb.com

HOW TO USE

To use this extension, First you need to enable extension from the configuration. You can enabled extension from Stores → Configuration → Zealousweb Extension → Advanced Gallery With Zoom Configuration → General Settings Configuration. After enabled extension add Enable the zoom

configuration for product page and category page product image zoom in "Product Page Zoom" and "Category Page Zoom".

After admin can choose the options of the different types of zoom and depends zoom effect options.

Backend Configurations : -

The screenshot shows the Magento 2 Admin Backend configuration page for the 'Advanced Gallery With Zoom Configuration' extension. The left sidebar contains a navigation menu with categories: GENERAL, ZEALOUSWEB EXTENSIONS (expanded), CATALOG, SECURITY, CUSTOMERS, SALES, and SERVICES. The main content area is titled 'General' and contains two configuration options:

- Enabled** [store view]: A dropdown menu set to 'Yes', with a checkbox for 'Use system value' (unchecked).
- Customer Groups** [store view]: A dropdown menu showing 'NOT LOGGED IN', 'General', 'Wholesale', and 'Retailer', with a checkbox for 'Use system value' (checked).

General Setting : -

- ◆ **Enable:** Yes | No.
- ◆ **Customer groups:** (Choose customer group which you want to see image zoom)

Enabled <small>[store view]</small>	Yes	<input type="checkbox"/> Use system value
Enabled On Product Page		
Gallery View (Grid/Slide) <small>[store view]</small>	False	<input checked="" type="checkbox"/> Use system value
Set to "true" to activate "Grid view" on product page		
Zoom Type <small>[store view]</small>	Basic Zoom	<input type="checkbox"/> Use system value
Choose zoom type		
Window Width <small>[store view]</small>	200	<input type="checkbox"/> Use system value
Between 100 to 400		
Window Height <small>[store view]</small>	200	<input type="checkbox"/> Use system value
Between 100 to 400		
Allow Tint <small>[store view]</small>	False	<input type="checkbox"/> Use system value
Window Fade In/Out <small>[store view]</small>	False	<input checked="" type="checkbox"/> Use system value
Window Position <small>[store view]</small>	Right Top	<input type="checkbox"/> Use system value
Enable Scroll Zoom <small>[store view]</small>	True	<input type="checkbox"/> Use system value

Product page zoom : -

- ◆ **Enable:** Yes | No.
- ◆ **Gallery View (Grid view/ Slider):** Choose True and False
- ◆ **Select Zoom Type:** Basic Zoom | Inner Zoom | Lens Zoom
- ➔ **Type Basic Zoom Options : -**
 - **Zoom Window Width:** Set zoom window width.
 - **Zoom Window Height:** Set zoom window height.
 - **Allow Tint:** True | False.
 - **Window FadeIn/Out:** True | False.
 - **Zoom Window Position:** Select zoom window position
 - **Scroll Zoom:** True | False.
- ➔ **Type Inner Zoom Options : -**

- **Scroll Zoom:** Default | Crosshair.
- **Window FadeIn/Out:** True | False.
- **Scroll Zoom:** True | False.

➔ **Type Lens Zoom Options :** -

- **Window FadeIn/Out:** True | False.
- **Scroll Zoom:** True | False.
- **Enable Easing:** True | False.
- **Lens Shape:** Square | Round
- **Lens Size:** Set lens size.
- **Lens FadeIn/Out:** True | False.

Category Page Zoom



Enabled <small>[store view]</small>	Yes	<input type="checkbox"/> Use system value
<small>Enabled On Category Page</small>		
Zoom Type <small>[store view]</small>	Basic Zoom	<input type="checkbox"/> Use system value
<small>Choose zoom type</small>		
Window Width <small>[store view]</small>	100	<input type="checkbox"/> Use system value
<small>Between 100 to 400</small>		
Window Height <small>[store view]</small>	100	<input type="checkbox"/> Use system value
<small>Between 100 to 400</small>		
Allow Tint <small>[store view]</small>	False	<input type="checkbox"/> Use system value
Window Fade In/Out <small>[store view]</small>	False	<input checked="" type="checkbox"/> Use system value
Window Position <small>[store view]</small>	Right Top	<input type="checkbox"/> Use system value
Enable Scroll Zoom <small>[store view]</small>	True	<input type="checkbox"/> Use system value

Category page zoom : -

◆ **Enable:** Yes | No.

◆ **Select Zoom Type:** Basic Zoom | Inner Zoom | Lens Zoom

➔ **Type Basic Zoom Options :** -

- **Zoom Window Width:** Set zoom window width.
- **Zoom Window Height:** Set zoom window height.
- **Allow Tint:** True | False.
- **Window FadeIn/Out:** True | False.
- **Zoom Window Position:** Select zoom window position
- **Scroll Zoom:** True | False.

➔ **Type Inner Zoom Options :** -

- **Scroll Zoom:** Default | Crosshair.
- **Window FadeIn/Out:** True | False.
- **Scroll Zoom:** True | False.

➔ **Type Lens Zoom Options :** -

- **Window FadeIn/Out:** True | False.
- **Scroll Zoom:** True | False.
- **Enable Easing:** True | False.
- **Lens Shape:** Square | Round
- **Lens Size:** Set lens size.
- **Lens FadeIn/Out:** True | False.

Zoom Type For Mobile [store view] Inner Zoom Use system value
Choose zoom type

Enable Scroll Zoom [store view] False Use system value

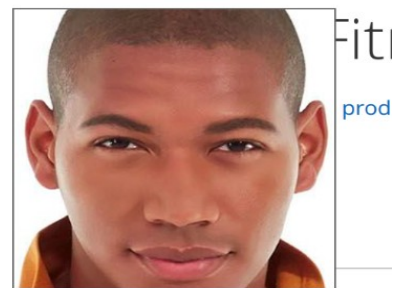
Mobile view zoom : -

- **Zoom Type:** Inner Zoom
- **Scroll Zoom:** True | False.

Frontend View : -

Basic Zoom Effect: -

ops > Jackets > Proteus Fitness Jackshirt



Size

- XS
- S
- M
- L

Color



Inner Zoom Effect: -

Home > Proteus Fitness Jackshirt



Proteus F

Be the first to review this p

As low as
₹45.00

Size

XS S M L

Color

Black Blue Orange

Qty

1

Add to Cart

Lens Zoom Effect: -

Home > Proteus Fitness Jackshirt



Pro

Be the

As lo

₹4

Size

XS

Color

Black

Qty

Tint Zoom Effect: -



Size

- XS
- S
- M
- L

Color

- Black
- Blue
- Orange

Qty

Add to Cart

ADD TO WISH LIST



Gallery View: -



Proteus

Be the first to

As low as

₹45.00

Size

- XS
- S

Color

- Black
- Blue

Qty

Add to Cart

ADD TO WISH LIST



Details


More Information

Reviews

Lens Effect with Gallery view: -

What's New Women Men Gear Training Sale

Home > Proteus Fitness Jackshirt



Proteus Fitness Jackshirt

Be the fit

As low as ₹45.00

Size XS

Color

Qty 1

ADD

Category Page Zoom Effect: -

11 Items

Sort By Position



Proteus Fitness Jackshirt
As low as ₹45.00

Montana Wind Jacket
As low as ₹49.00

Jupiter All-Weather Trainer
As low as ₹56.99

Typhon Performance Fleece-lined Jacket
As low as ₹60.00

